

NU406A



USB2.0 One-Touch-Backup 2.5" IDE HDD Enclosure

Index

● Trademark	1
● Introduction	1
● System requirements	1
● Package contents	1
● Install 2.5" Hard drive	2
● Start in Windows® ME? 2000? XP and Mac OS	3
● Window® 98SE driver installation	3
● Indicator description	6
● Safely Remove NU406A	6
● Installation Backup Utility Program	6
● How to use touch backup utility	7
● How to use an auxiliary power cord	11

- Troubleshooting11

- **Trademark**

All names and products mentioned below are registered trademarks of their respective companies.

- **Introduction**

Thank you for purchasing our NU406A, this manual contains information of installation and device capabilities. Please read this manual thoroughly before your start in and retain it for future reference. NU406A is an USB2.0 interface enclosure. It is extremely easy to mount an existing 2.5" IDE hard disk drive inside WITHOUT ANY SCREW and implement a high performance external backup storage device. NU406A has an advantage of single backup button. It provides an easy way to make a daily backup task just by one touch. You can just preset a copying path and specify suitable attributes to an application utility program that including in the bundle disc.

Product feature:

- High performance, USB2.0 interface.
- Backward compatible with USB1.1 specification.
- Advantage of one button backup.
- Plug & Play and hot swappable.
- Perfect for regular or daily backup user.

- **System requirements**

- IBM® PC or Macintosh® computer with one free USB2.0 port*.
- Supports Windows® 98SE **? Windows® ME? Windows® 2000? Windows® XP.
- Supports Mac™ OS 9.x and 10.0.X or later ***.
- Requires 2.5" hard drive installed to NU406A enclosure before using.

* NU406 can work at both USB1.1 and USB2.0 port, but to achieve a hi-speed transfer rate, your NU406A must be connected to an USB2.0 host port.

** You need to install driver first time in Windows® 98SE.

*** As the backup utility do not support Mac OS, for Mac users NU406A can only be used as normal USB2.0 enclosure without one-touch-backup function.

- **Package contents**

Please check following items that should be in your package, if any of items are short supplied or damaged, please inform to our supporting center or your local dealer.

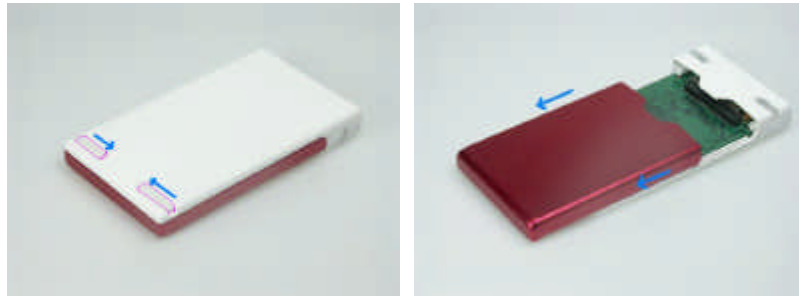
- NU406 enclosure (without hard drive)
- USB cable (with an extra USB auxiliary power cord)
- Setup driver and backup utility with manual disc
- Clear PVC Carry-bag with I/O open

- **Install 2.5" Hard drive**

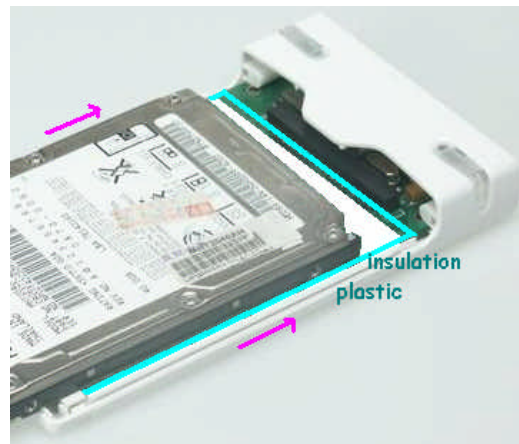
Before using NU406A

- Electrostatic discharge can damaged electronic components. Be sure you are properly grounded before beginning any procedure. You can touch a metal part of computer's chassis or power supply unit to discharge any static charge that may have built up inside your body.
- To avoid damage to your hard drive, please handle with much care. Do not shake or drop hard drive.

1. Unlock latches and slide the aluminum cap to open the enclosure.



2. Connect 2.5" HDD into the 44-Pin connector on circuit Board.



Notice: Handel the enclosure by the edge to avoid touching the electronic components.
Make sure not to remove or damage the 'insulation plastic'.

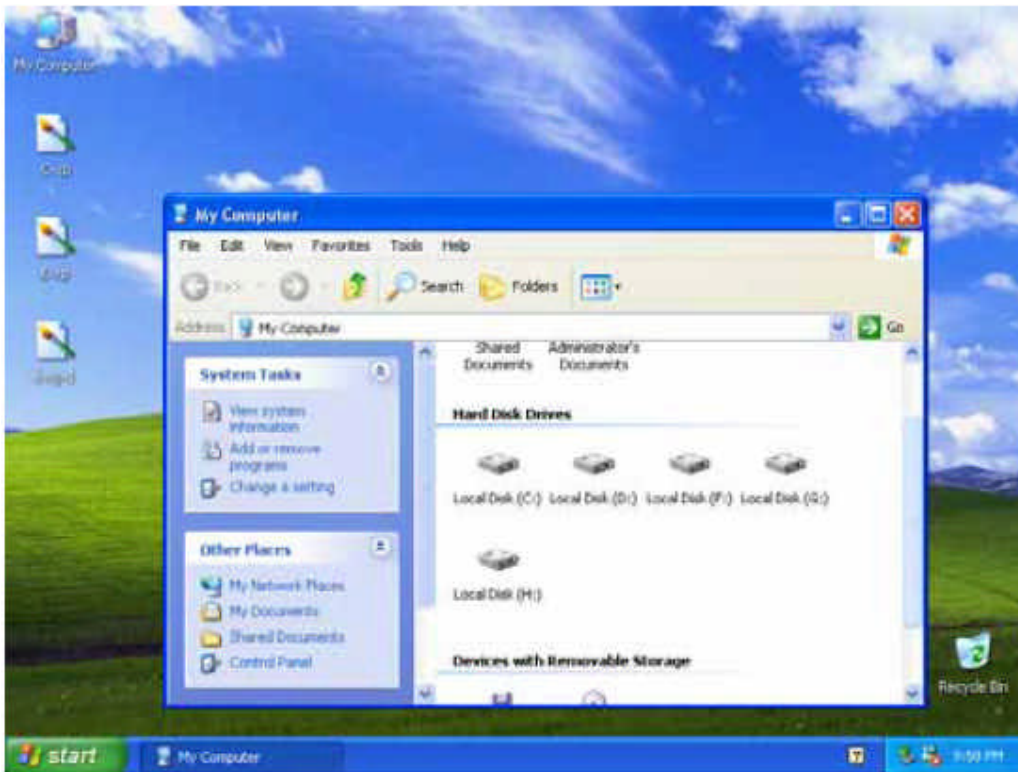
3. Slide the aluminum cap and lock latches to close the enclosure.



- **Start in Windows® ME? 2000? XP and Mac OS**

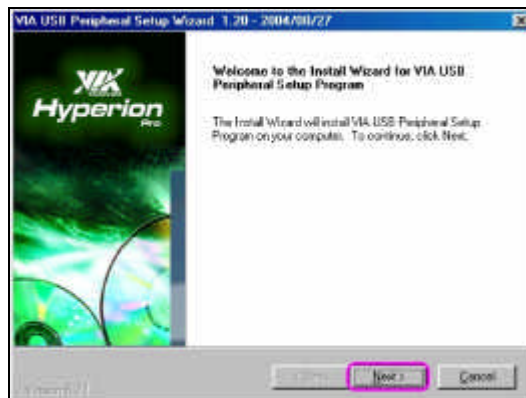
NU406A is driver-free for Windows® ME? Windows® 2000? Windows® XP and Mac OS.X, you do not have to install any driver, just connect NU406A with hard drive to PC's USB2.0 port directly.

Windows will detect your NU406A automatically and reveal a new **“Removable Disk”** or **“Local Disk”** icon in **“My Computer”**.



- **Window® 98SE driver installation**

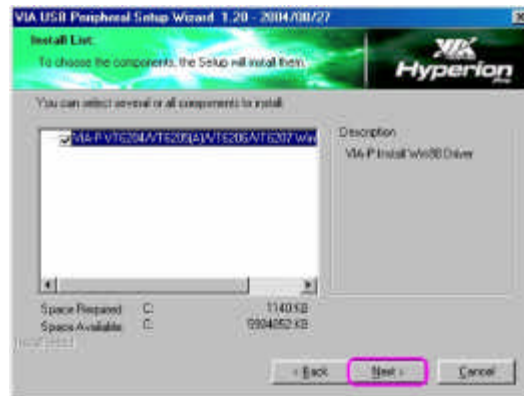
1. Insert software driver disc into your CD-ROM drive.
2. Double click on **“setup”** icon in **“98 Driver”** folder.
3. Click **“Next”** to continue.



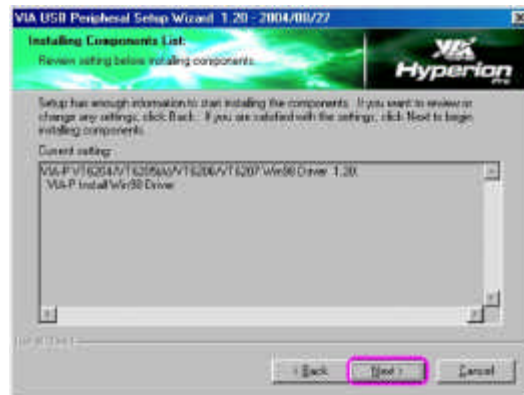
4. Check? **I Agree?** then click "Next" to continue.



5. Click "Next" to continue.



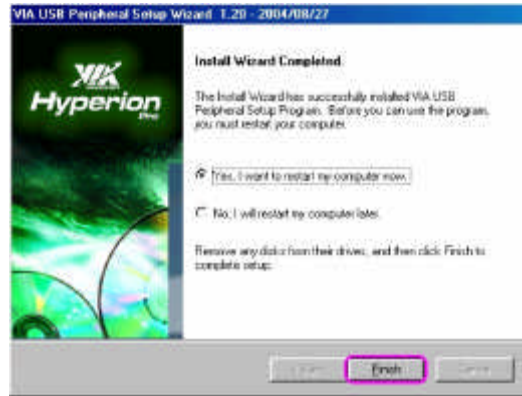
6. Click "Next" to continue.



7. Click "Next" to continue.



8. Click **"Finish"** to restart your computer

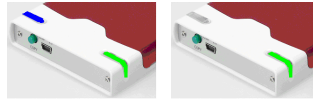


9. Reboot your computer, a **"removable Disk"** icon will display under **"My Computer"** window.



- **Indicator description**

There is a GREEN power LED in right side and a BLUE access LED in left side of NU406A for diagnosis. Both the GREEN power and BLUE access LEDs will light up when this device has been connected to your computer's USB port and turn after system has shut down. If data is transmitting between PC and NU406, the BLUE access LED will flash.



- **Safely Remove NU406A**

It's recommended to use **"Removable Device"** icon on the taskbar, click to disable the storage device before unplugging NU406A.

In Macintosh®, you can use **"Eject"** command to eject this storage device for safe remove.



! WARNING:

Please do not remove NU406A while data is transmitting, this may cause your computer to crash and lost your valuable data.

- **Installation Backup Utility Program**

1. Insert software driver disc into your CD-ROM drive.
2. Double click on **"VBTUCopy"** icon in **"VBTUCOPY"** folder to complete the backup utility program installation.

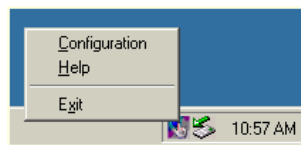


- **How to use touch backup utility**

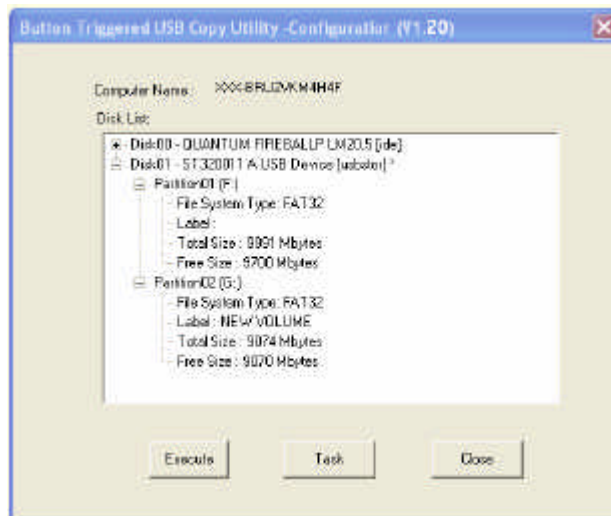
The **button-triggered USB copy utility** provides an easy way to make a backup copy of data to NU406A. The user needs to set up a copy task first, and then save it to a file. Then whenever the user wants to backup data, they can just press the button on NU406A. The application will detect the button being triggered and opens up a window that allows the user to choose and proceed the copying tasks. The utility supports friendly multi languages of user interface for user ease of use.: Danish, Dutch, English, French, German, Italian, Japanese, Korean, Portuguese, Simplified Chinese, Spanish, Traditional-Chinese and Thai are available.

How to arrange configuration?

After the utility has been installed successfully, the application will run automatically whenever the OS boots up, and it is displayed as the icon in the task bar below.



To open the Configuration window, double click on the left mouse button or right click to select the *Configuration*.



The dialog window will display the computer name and disks on the system, and the supported disk will be displayed with "*" "

The dialog window provides following options:

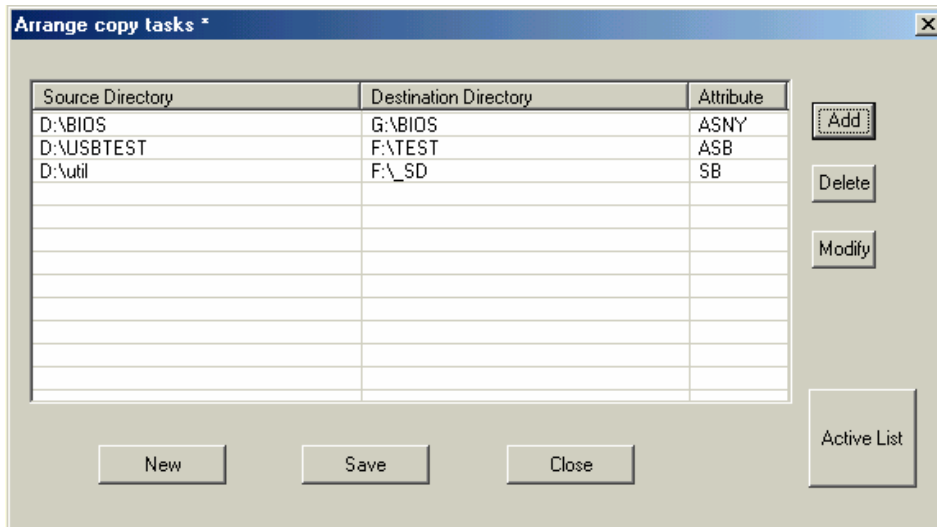
Execute: To execute all edited tasks.

Task: Click on this button to edit copy tasks.

Close: End the configuration dialog.

How to edit copy tasks?

Click on the tasks from the previous window and another window will pop up:



Each copy task comprises source directory, destination directory and attributes, which are all displayed in this window.

The buttons are:

New: This will clear all edited tasks.

Save: Save current edited task list to a file.

A default file is generated by the application and is named by 'Disk' with the unique signature of the disk, such as "555AAAA" and an extension of 'CT':

EX:Disk555AAAAA.CT.

Close: Close current dialog.

Add: Add a new task to the task list.

Delete: Delete the selected task.

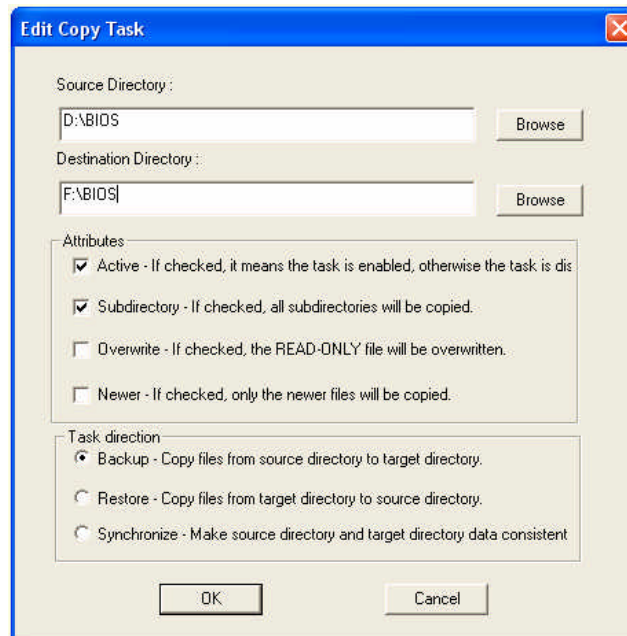
Modify: Modify the selected task.

Active List: Open the window to arrange his active task list.

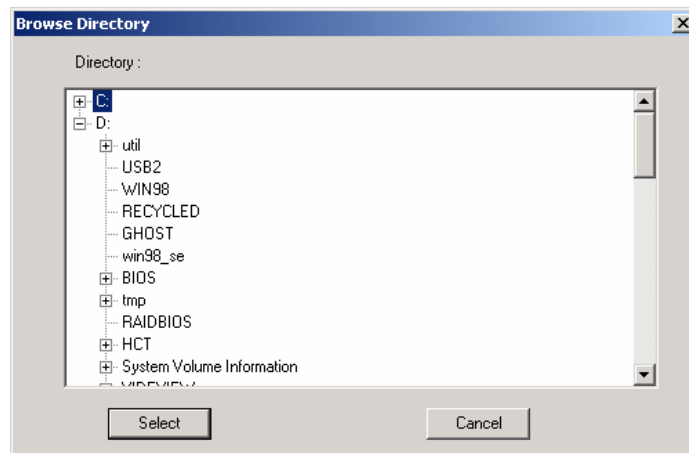
Note: When the button is pressed on NU406A, the application will use the default configuration file as the task list for completion, because it is specifically for each drive.

Users can also double click on the task item, or right click and select an item to modify that item.

How to modify task items?



The user can type in the source directory or destination directory directly or use the **browse** button below.



There are four types of attributes being specified:

- Active:** To enable or disable the task item. When the active button is unchecked, the copy task will be skipped.
- Subdirectory:** When this attribute is checked, all the subdirectory of the source directory will be copied to the destination directory. Otherwise only the files located on the source directory will be copied.
- Overwrite:** If this attribute is checked, all source files will be copied to the destination directory. Otherwise the read-only files on the destination directory will be skipped.
- Newer:** If this attribute is specified, the files of source directory will only be copied to their destinations when the source file is more updated than the destination file.

There are three types of copy directions you can specify:

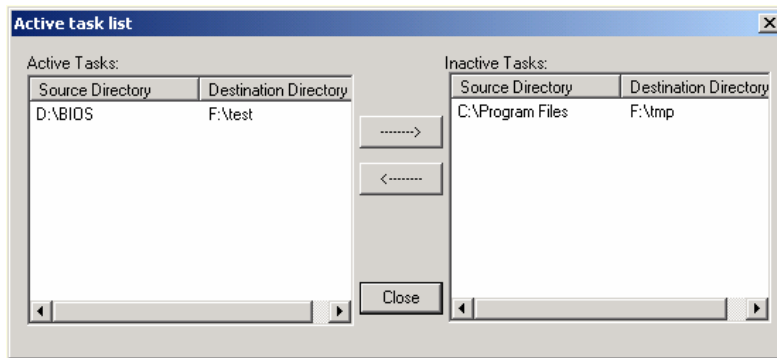
Backup: To copy files from source directory to destination directory.

Restore: To copy files from destination directory to source directory.

Synchronize: To copy files bi-directionally and synchronize the source and destination directories. If synchronization is checked, the 'Newer' attribute will automatically be checked.

Once a user completed editing the copy task attributes, click OK and the task item will be added to the task list. The application will check if the source directory and destination directory are valid, and if they are not, the application will not add it to the task list.

How to arrange active task list?



These window displays contain two lists: Active tasks and Inactive tasks. Highlight the tasks and use the > or < to move them to and from the active and inactive lists.

- **How to use an auxiliary power cord**

NU406A allows you install a 60GB/4200 RPM hard drive without any auxiliary power, but if you use a higher capacity drive that requires power current higher than 500ma limit, it may cause shortage of power from your USB port and make the device running unstable.

In this situation, connecting another twin USB extra power plug to one more free USB port (see the following photo) is the solution to get more power supply for your high-powered hard drive.

The USB auxiliary power cord is thinner than a regular cable. The picture showing below is connecting an extra auxiliary power cord to another USB port for getting more power.

However, you can't only use auxiliary USB plug to work your NU406A.



- **Troubleshooting**

This chapter covers some basic things you can do in the event that you encounter problems using NU406A in your system.

- **Why computer does not recognize NU406A.**

ANS: 1. Make sure the USB cable is properly connected to your NU406A. Do not connect the auxiliary USB plug only.

2. If your NU406A is connected to a laptop or a bus hub (non-self powered hub), you may need to connect the auxiliary power cable to provide enough power for NU406A. See **“How to use an auxiliary power cord”** section for more detail information.

3. Make sure your host USB port is properly work, if you are unsure please try another USB port.

- **Why data transfer between computer and device is slow?**

ANS: You may connect to an USB1.1 port not USB2.0, please make sure of your host port from your computer hardware reference manual. NU406A can work at both USB1.1 and USB2.0 port, but no achieve a hi-speed transfer rate, we recommend you must be connected NU406A to an USB2.0 high-speed host port.

- **Why the backup button can't work?**

ANS: 1. Please make sure that you have installed backup utility program, if the utility program has been successfully installed, it will show an icon in the task bar when windows was booting.

2. Please make sure that you have preset a copying path in this backup utility and specifying a suitable attribute that what you attempt to do and save it to a file. See **“How to use touch backup utility”** section for more detail information.

3. Close exit backup utility window.