

GrabBeeX+

USB 2.0 AV Grabber



User's Manual

FEDERAL COMMUNICATIONS COMMISSION

This device complies with Part 15 of the FCC Rules Operation is subject to the following two conditions: this device may not cause harmful interference, and (2) this device must accept any interference received, including interference that may cause undesired operation.

This equipment has been tested and found to comply with the limits for a Class B Digital Device, pursuant to part 15 of the FCC Rules. These limits are designed to provide reasonable protection against harmful interference in a residential installation. This equipment generates, uses and can radiated radio frequency energy and, if not installed and used in accordance with the instruction, may cause harmful interference to radio communication.

However, there is no grantee that interference will not occur in a particular installation. If this equipment does cause harmful interference to radio or television reception, which can be determined by tuning the equipment off and on, the user is encouraged to try to correct the interference by one or more of the following measures:

- Reorient or relocate the receiving antenna.
- Increase the separation between the equipment and receiver.
- Connect the equipment into an outlet on a circuit different from that to which the receiver is connected.
- Consult the dealer or an experienced radio/TV technician for help.

Notice: Changes or modifications not expressly approved by the party responsible for compliance could void the user's authority to operate the equipment.

CE DECLARATION

This device complies with CE . These limits are designed to provide reasonable protection against harmful interface in a residential installation.

Printed in TAIWAN R.O.C No.0272304

All contents are subject to change without notice.

All trademarks are the property of their respective owner

Chapter 1. Overview	1
1.1 Introduction	1
1.2 Features	1
1.3 Specifications	2
1.4 Package Contents	2
1.5 Minimal System Requirements	2
Chapter 2. Installation	3
2.1 Hardware device description	3
2.2 Driver Installation	4
2.3 Application Software(Video Jukebox) Installation	8
Chapter 3. Basic Function Operating	9
Chapter 4. Trouble Shooting	14

1.1 Introduction

Congratulations on your purchase of “**GrabBeeX+**”. The “**GrabBeeX+**”- New Generation USB2.0 Audio/Video grabber is the best ideal companion for your portable audio/video application. Real-time MPEG 1/2/4 recording make you have powerful video application on hand

GrabBeeX+ is the bridge between your computer and analog camera, VCR, camcorder or other video source.

GrabBeeX+ is small enough to fit in the palm of your hand and is ideal for both notebook and desktop computers.

1.2 Features

- Small Wonder--Dimensions are (L)81mm x (W)30mm x (H)15mm
- Audio and video go though USB 2.0 bus (WinXP) to make best performance
- High speed USB 2.0 data transfer rate for best audio/video recording
- Encoding MPEG 1 / MPEG 2 / MPEG 4 format directly, Ideal formats for video application
- Up to 25 fps motion capture capability at 720x576(PAL) & 30 fps at 720x480(NTSC)
- SnapShot function support
- Composite, S-Video analog input, NTSC, PAL and SECAM multi system support
- Recording period setup
- Support Brightness, Contrast, Hue, Saturation, Sharpness control
- Powerful video editing function include Motion Video Special Effects/ Title Effects/ Picture-in-Picture Effects/ Slow & Fast Motion Video Effects/ background music/ color background/ Transitional Effects
- Plug & Play
- Low power consumption. Ideal for portable computer too
- No Battery---No need to install batteries or run off the wall adapter

1.3 Specifications

- Video input : One RCA composite, One S-Video.
- Video system : NTSC, PAL and SECAM multi system support
- Audio input : in WinXP, go through USB; in Win2000, go through sound card
- Motion capture : MPG /AVI format up to 720x480@NTSC, and 720x576@PAL resolution
MPEG 4 format 320x240@NTSC and 352x288@PAL resolution
- Still image capture : BMP/JPG/TIF/PCX/TGA file format
- Performance : Up to 25 fps at 720x576 for PAL, 30fps at 720x480 for NTSC
- Power Source : 5VDC,300mA(max) through USB port

1.4 Minimum System Requirements

- USB 2.0 equipped computer
- Pentium 4 1G or above
- 128MB of RAM
- Windows 2000/XP
- Sound card

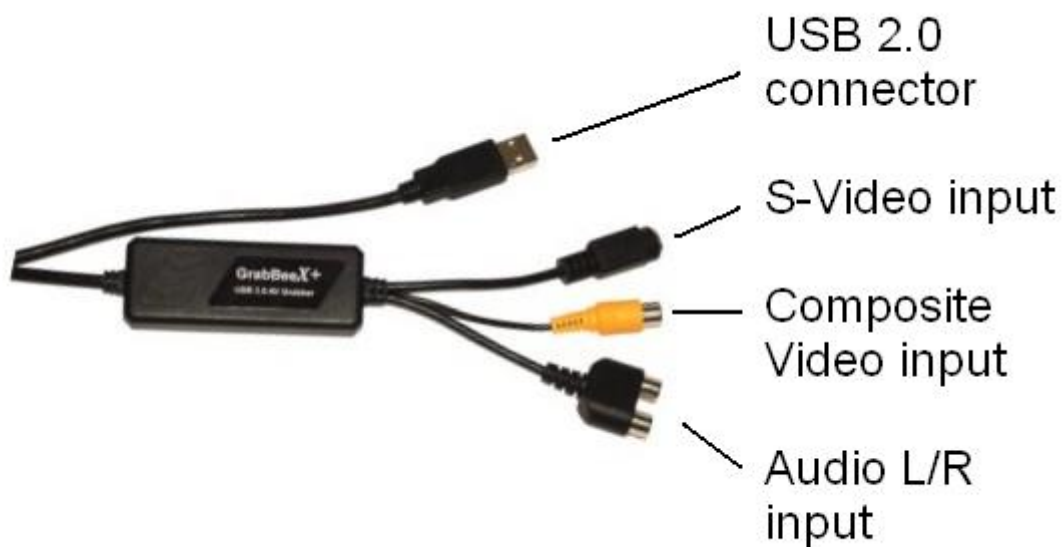
1.5 Package Contents

- GrabBeeX+ USB 2.0 Audio/Video Grabber
- Video Jukebox software CD
- Ulead VideoStudio editing software
- User's manual

※ **Please make sure your computer has USB2.0 port correctly installed and functioning !! (We strongly recommend updating your WinXP to SP1 or Win2000 to SP4 and updating USB2.0 host driver before installation to make sure computer's USB2.0 is correctly functioning)**

- Steps :** (1) Install Driver (see 2.2.1)
(2) Plug GrabBeeX+ hardware (see 2.2.3)
(3) Install AP software (see 2.3)

2.1 Hardware device description



USB 2.0 connector : Connect to USB 2.0 port of your computer

S-Video input : S-Video input from external A/V device(e.g.VCR)

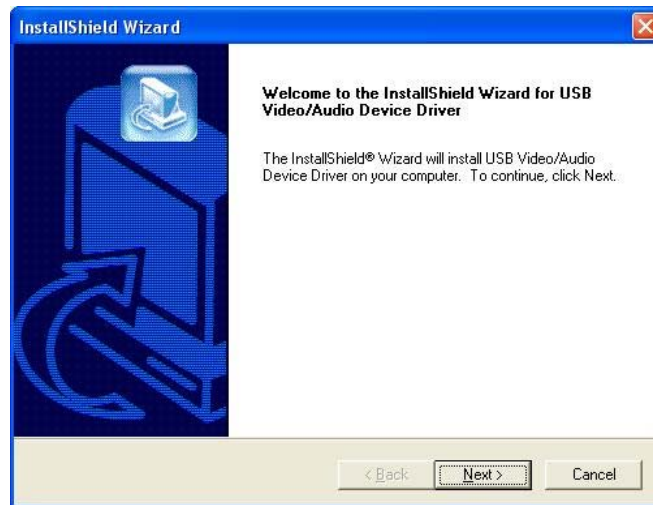
Composite video input : Composite video input from external A/V device(e.g.VCR)

Audio L/R input : Audio input from external A/V device **(In WinXP);**
(In Win2000 – please connect external A/V device audio to line-in of Sound card)

2.2 Driver Installation

※ **Do not connect GrabBeeX+ to computer USB port before driver installation**

2.2.1. Please insert "**Multimedia Installation Kit**" CD-ROM into your CD-ROM drive; Run " **E:\GrabBeeX+\Driver\Setup.exe** "; (assuming CD-ROM drive in E drive)



Click "**Next**"

2.2.2. Complete Setup Wizard



Click "**Finish**"

2.2.3. Plug the GrabBeeX+ device into computer's USB2.0 port; System will detect new Video device as below.



Choose “**Install the software automatically (Recommended)**”
And Click “**Next**”

2.2.4. When Windows XP show message about this software didn't pass windows logo, please click “**Continue Anyway**” (though GrabBeeX+ driver didn't apply for windows logo approve, it is thoroughly tested by engineers, and it will not cause harm to your system)

2.2.5. Complete the video driver installation



Click “**Finish**”

2.2.6. System detect new Audio device as below.



Choose “**Install the software automatically (Recommended)**”
And Click “**Next**”

2.2.7. When Windows XP show message about this software didn't pass windows logo, please click “**Continue Anyway**” (though GrabBeeX+ driver didn't apply for windows logo approve, it is thoroughly tested by engineers, and it will not cause harm to your system)

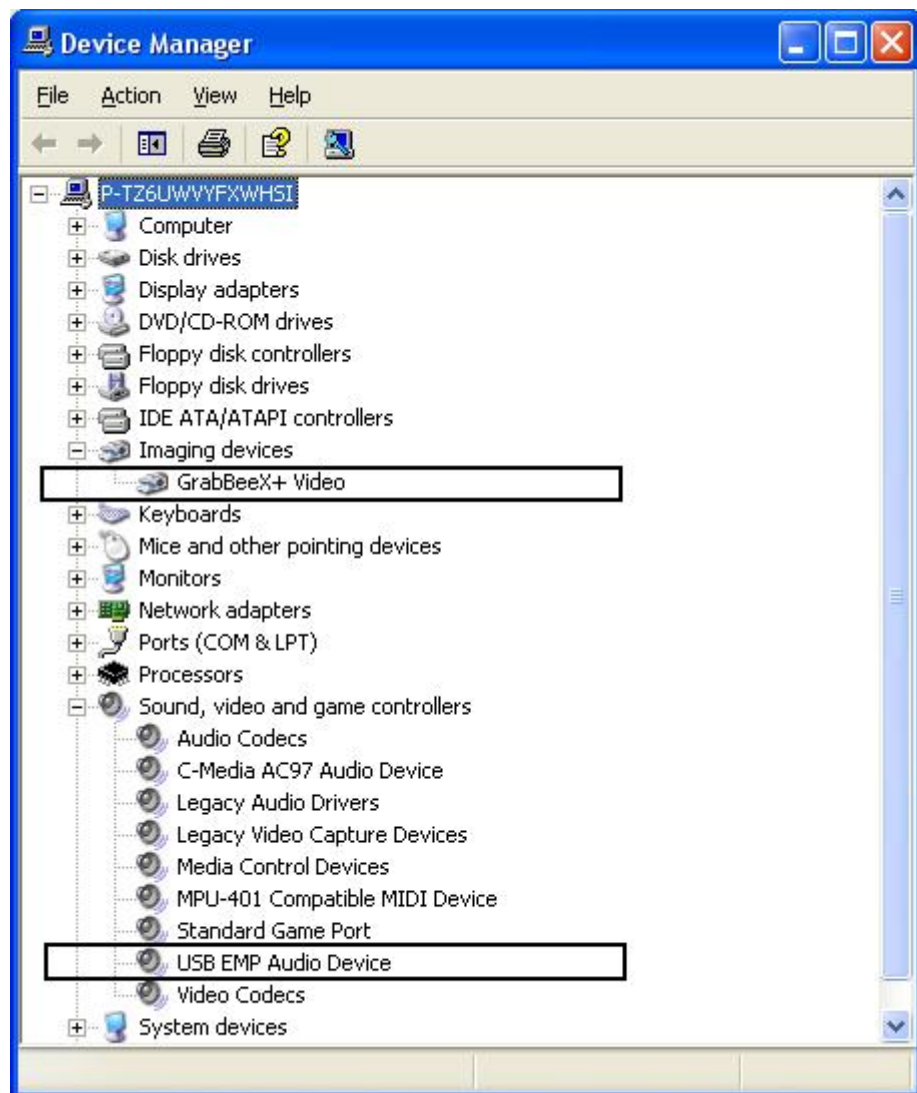
2.2.8. Complete the Audio driver installation



Click “**Finish**”

Chapter 2. Installation

2.2.9. Please check GrabBeeX+ driver was install successful in your computer; (Go to My Computer->Control Panel->System ->Hardware->Device manager”)



2.3 Application Software (Video Jukebox) Installation

2.3.1. Please insert "**Multimedia Installation Kit**" CD-ROM into your CD-ROM drive; Run " **E:\GrabBeeX+\AP software\Setup.exe** "; (assuming CD-ROM drive in E drive)

2.3.2. Welcome to the InstallShield wizard;
Click "**Next**"

2.3.3. Choose destination location;
Click "**Next**"

2.3.4. Select Program Folder;
Click "**Next**"

2.3.5. Finished Jukebox software installation;
Click "**Finish**"

2.3.6. Install **Windows Media Format 9 Series Runtime Setup**;
Click "**Yes**"

2.3.7. License agreement
Click "**Yes**"

2.3.8. Finished Windows Media Format 9 Series Runtime installation;
Click "**Ok**"

2.3.9. Driver install;
Click "**No**"

Completer AP software installation!

Chapter 3. Basic Function Operating

3.1. Starting : Please click the “Video Jukebox” icon

After starting application, you can see control panel as below



also one preview window as below



3.2. Preview : Please move mouse cursor into Preview window and right click, function menu will appear as below



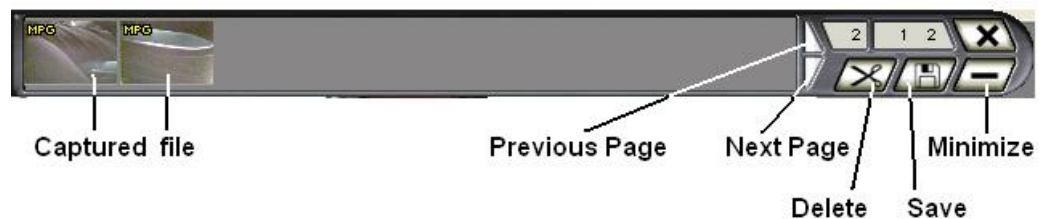
Resolution : There are 4 resolution video preview you can select
NTSC mode : 352x240, 640x480, 720x480, Full screen
PAL mode : 352x288, 640x480, 720x576, Full screen

3.3. Close : Exit Video Jukebox program

3.4. Record : When you click “**Record**”, it will start to record video, the recording video resolution depend on preview resolution, but MPEG4 file(ASF) resolution is 320x240 in NTSC and 352x288 in PAL.

✳ **In order to make smooth recording, we recommend you do not move mouse during recording**

3.5. Stop : Stop recording; After you click “**Stop**“, a table will be shown



you can select a file and select “**Delete**” or “**Save**” function.

3.6. Play : Play the recorded file

3.7. Pause : Pause the playback file

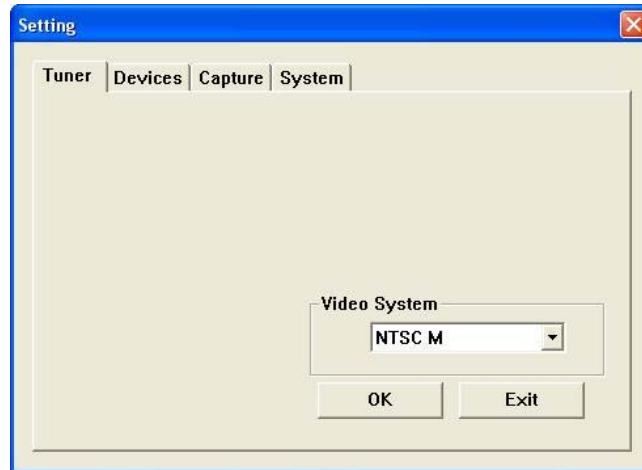
3.8. Svideo input / Composite Video input : Click to select which input video you want display

3.9. Color Control : Brightness/Contrast/Hue/Saturation/Sharpness adjustment

3.10. Still Image Capture : the resolution depend on Preview mode resolution

3.11. Setting : After you click “**Setting**”, a screen appear as below

3.11.1. Tuner : Setting input video system and then click “**OK**”

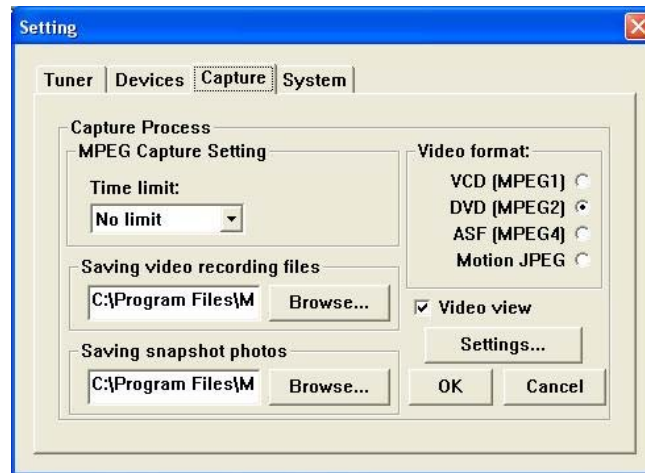


3.11.2. Devices : Please choose Audio input driver and then click “**OK**”



- ※ Under WinXP, audio go through USB, please choose “**USB EMP Audio Device**”
- ※ Under Win2000, audio go through Sound card, please choose your computer’s own audio device

3.11.3. Capture : Setup capture function



3.11.3.1. Time limit : Setup recording period

3.11.3.2. Saving video recording files / Saving snapshot photos

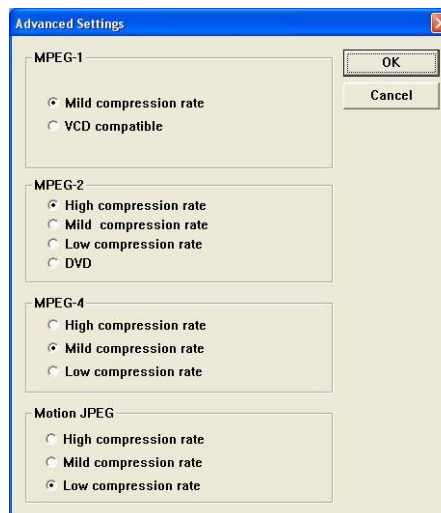
You can change any location as you want

3.11.3.3. Video format : Choose which format you will record

※ The recording performance depend on your computer system speed

3.11.3.4. Video view : Enable/Disable video window display during recording

3.11.3.5. Settings : Setup recoding format compression rate



3.11.3.6. System : Show your computer information

3.12. Mute : Volume On/Off

3.13. Full Screen mode : You can Double left click inside video window to switch between full screen and previous screen size

※ **In full screen mode, if you didn't move mouse, then mouse will disappear until you move mouse again.**

Q1 : Why My system can not detect GrabBeeX+

A1 : (a) Make sure you enable USB2.0 in motherboard BIOS setup
(b) Please make sure that your system has the latest USB2.0 host driver.
For Win XP, please upgrade to Service Pack 1.
For Win2000, please upgrade to Service Pack 4.

Q2 : Why can not see video display

A2 : (a) Maybe your video system setup is incorrect, please check your hardware connection (**see page 3; 2.1 Hardware device description**) and choose the correct video system (**see page 11; 3.11.1. Tuner**)
(b) Please make sure your system got latest USB2.0 host driver.
For Win XP, please upgrade to Service Pack 1.
For Win2000, please upgrade to Service Pack 4

Q3 : Why is the resolution always 320x240 in preview mode

A3 : Because you plug GrabBeeX+ in USB1.1 port, or though your USB port is 2.0, but didn't upgrade USB2.0 driver, please make sure USB port is USB2.0 and upgrade the USB2.0 host driver from Microsoft Website

Q4 : Why does the system show "**High Speed device plug into Full speed USB port...**"

A4 : (a) Please make sure your system support USB2.0 hardware port.
(b) Please make sure that your system install USB2.0 Host driver already

Q5 : Why do I get unstable video during preview and recording ?

A5 : If you are using Ultra DMA hard disk, please updated latest driver of IDE ATA/ATAPI controller.

Some motherboard bundled driver is not latest version, we suggest that you use XP system bundled driver.

Q6 : Why can not hear anything during preview mode?

A6: In WinXP, Audio go through GabBeeX+, and choose correct Audio device (please see 3.11.2.)

In Win2000, the audio go through sound card Line-in, please check your sound card function.

Chapter 4. Trouble Shooting

Q7 : How can I get minimum number of dropped frames during video capture ?

A7 : The best recording performance depends on your computer system performance, but you can also take some steps as below to improve performance

- (a) Try lowering the resolution format you record.
- (b) Enable hard disk drive DMA ; Go to **My Computer->Control Panel ->System->Hardware->Device Manager->Disk drives to setup**
- (c) Keep Hardisk free space larger.
- (d) Use speed more than 7200 rotation hardisk drive
- (e) Disable Power Management in BIOS
- (f) Disable Power Saving mode of monitor
- (g) Close some resident programs of your system
- (h) Defrag your hardisk
- (i) Do not run other program during recording

Q8 : I can preview video but when recording, the system crashed/hanged

A8 : (a) Please install DirectX 9.0 or above from driver CD.

- (b) Maybe your VGA card driver is not compatible with direct draw very well, please update new VGA driver
- (c) Your system resident too many programs which occupies the memory, please close unnecessary programs
- (d) Please lower the hardware accelerator, you can go to **My Computer->Control Panel->Display->Settings->Advanced->Performance** to adjust it.